



The Health Promotion Learning Lab (HPLL): Innovative Methods of Applying Technology for Health Promotion and Education



Sarah Wessler, MA
The Children's Health Fund New York, NY

The HPLL in Harlem

- Harlem has the **highest rate of HIV among women** in New York City ¹
- Over 31% of children 12 and under have **asthma** ²
- 25% of adults in Harlem are **obese** ²
- 16% of Harlem's children (ages 5-17) show signs of "**serious emotional disturbance** sufficient enough to meet diagnostic criteria" ²
- Many Harlem residents have severely **limited access** to adequate comprehensive healthcare ²
- 34% of Harlem residents **do not graduate from high school** ³



Health Education Model

This unique, state-of-the-art health education "Learning Lab" located in a School-Based Health Center (SBHC) offers:

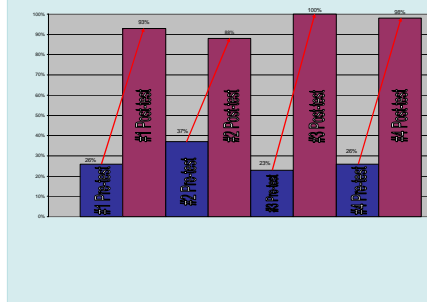
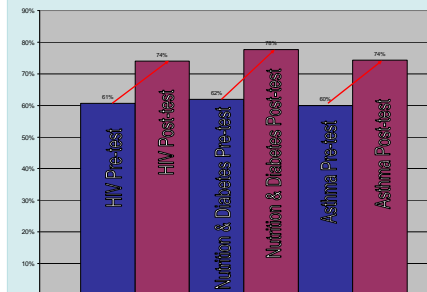
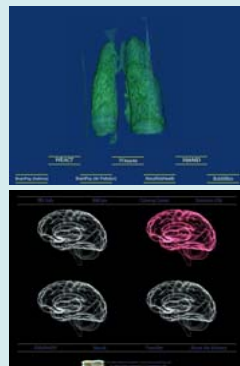
- Modified **informal science** education
- Peer mentoring through our **Explainer program**
- **Custom lesson plans** to complement classroom curriculum
- Access to **technological resources**
- **Interactive** education models
- **Age-specific**, hands-on technology;
- **Personal, public, and community health** education



Resources

We have created customized lessons to meet the needs of the diverse Harlem community. Lessons include:

- Asthma
- Obesity/Nutrition
- Mental Health
- Oral Health
- Reproductive Health
- Environmental Health
- Advocacy/Empowerment
- Youth Development



Effective Teaching Methods

We offer **interactive technology lessons and inquiry-based, museum model workshops**

- Complex health information is presented through hands on activities, questioning strategies and multi-sensory learning
- Internet scavenger hunts on pre-selected, age-appropriate custom web interfaces support content areas and develop research and critical thinking skills

Resources include:

- High-technology audio visual systems
- Skype online video conferencing
- Information Systems
- Traditional curriculum enhancement
- Collaborative efforts with community schools and organizations
- Mobile technology that can be used for health fairs and community events

Outcomes and Replication

The HPLL is replicable:

Program design incorporates efficacy testing and replication

Curriculum models and tools have been field-tested for implementation in other programs

First full program replication:

The Carl Sagan School Tampa, Florida

Citations:

1. http://www.nyc.gov/html/doh/downloads/pdf/ah/surveillance2006_tables_all.pdf
2. The Children's Health Fund. "Health Status of Harlem's Children: Improving, but Lagging Far Behind the Rest of the City." May 3, 2006. <http://www.childrenshealthfund.org>
3. Nicholas, Stephen W., et al. "Addressing the Childhood Asthma Crisis in Harlem: The Harlem Children's Zone Asthma Initiative." *American Journal of Public Health* 95.2 (2005): 245-9.